

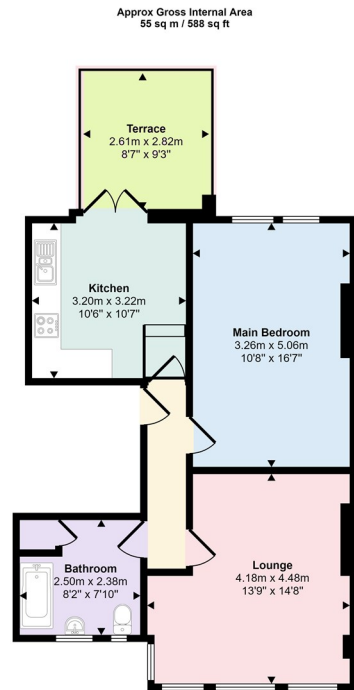
est 1979



## Muswell Hill Road, London, N10 3JB

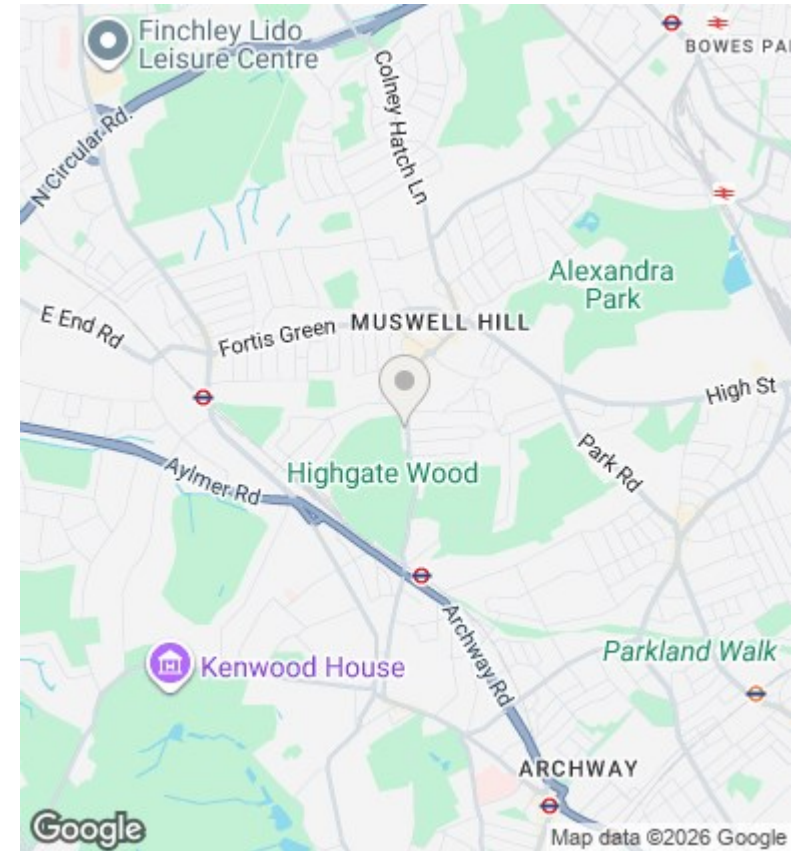
£525,000

- Backing Highgate Wood
- Private Rear Balcony
- Chain Free
- Spacious Eat In Kitchen
- One Double Bedroom
- Close To Highgate Tube
- Kitchen/Diner



Floorplan

This floorplan is only for illustrative purposes and is not to scale. Measurements of rooms, doors, windows, and any items are approximate and no responsibility is taken for any error, omission or mis-statement. Icons of items such as bathroom suites are representations only and may not look like the real items. Made with Made Snappy 360.



## Directions

## Viewings

Viewings by arrangement only. Call 020 8444 5222 to make an appointment.

## Council Tax Band

## EPC Rating:

C

Energy Efficiency Rating		Current	Potential
<i>Very energy efficient - lower running costs</i>			
(92 plus)	A		
(81-91)	B		81
(69-80)	C	74	
(55-68)	D		
(39-54)	E		
(21-38)	F		
(1-20)	G		
<i>Not energy efficient - higher running costs</i>			
<b>England &amp; Wales</b>		EU Directive 2002/91/EC	